

VIVO Aviary System

- Portal aviary system with the maximum number of birds per square meter of floor space
- Excellent overview and easy inspection

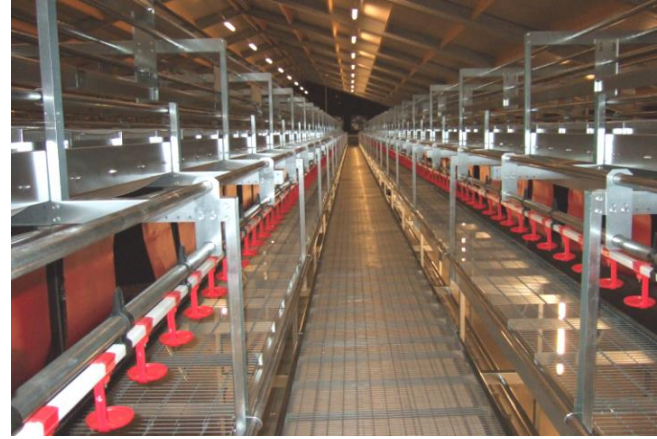


Layout

- Inspection walkway in the system
- Corridors between living rows
- Additional living space on top of the nest rows
- Independently operating feeding lines on the top and bottom floors lead birds past nest and water
- With multiple widths of living rows and corridors, the system can be optimized to the width of the poultry house
- Tree-structure of various floors

Volito Valego Integrated Nests

- Rack Drive (RDE), Torque Drive (TDE) or Moveable Floor (MFE) Expulsion systems
- Quick and easy assembly with smart Click&Fix system
- Walls and roofs from durable film faced plywood
- Self-cleaning AstroTurf® nest pads
- Egg belt options: 1 x 500 mm or 2 x 250 mm
- All nest rows are on one level above the corridors



Operation

- Wide corridors allow to walk and inspect throughout the aviary system
- Nest inspection by walking on the raised floor between the nest rows
- Possibility to close the floor space under the system (during the first weeks)
- Easy to catch birds

Configurations

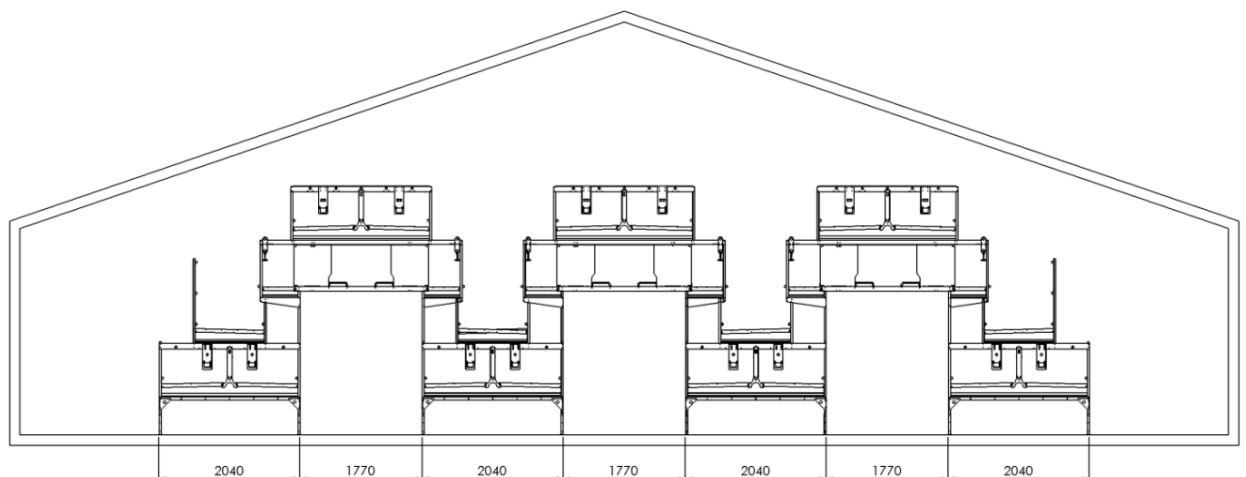
- VIVO 1700
 - corridor: 1360 mm
 - top floor: 1710 mm
- VIVO 2000
 - corridor: 1770 mm
 - top floor: 1980 mm

System

- Sturdy wire mesh floors
- Chain feeding lines
- Drinking lines with nipples or cups
- Very solid and robust system
- Stainless steel posts
- Optional manure drying

Compliance

- Compliant with KAT regulations
- Designed according to the EU guidelines



VIVO 2000